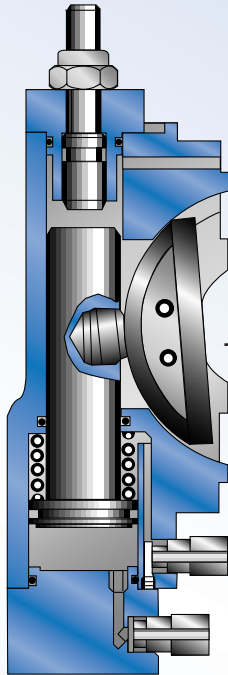
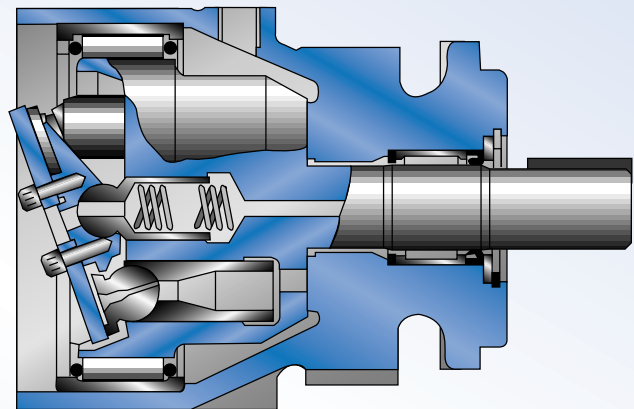


AXIAL PISTON PUMPS AND MOTORS

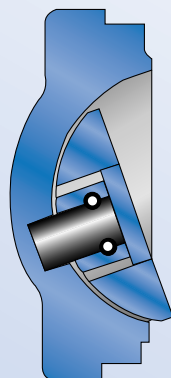
Typical example of a pressure control this illustration is of a constant pressure control type LB.



ROTARY POWER pumps and motors are of swashplate construction. The one piece rotor is supported by high capacity roller bearings which provide excellent life characteristics. The unique running plate and retainer plate enhance the units ability for a wide range of fluids.



Typical example of a volume control, this illustration is of a fixed displacement type FA.



The basic module shown above is common to all types of pump and motor control, the addition of an endcase and actuator plus camplate completes the assembly. The characteristic is determined by the control assembly.

Standard options are shown in this catalogue further details are available upon request.